

**SAFETEA-LU Safety Planning Integration
Pilot Project
FDOT District 5 and Volusia County/MPO**



TOA worked with the FDOT District 5 Planning Office, the Volusia County Traffic Engineering Division, and the Volusia MPO to develop a pilot process for implementing SAFETEA-LU safety planning requirements and for screening local roadway networks for safety problems and opportunities.

Project Highlights

- Project approach considered short term safety countermeasures, mid-term coordination of safety projects with 5 year and 10 year plans, and long term measures to improve system safety.
- Presentations to District 5 MPO executive directors to propose methodologies for implementing SAFETEA-LU requirements.
- Considered safety opportunities—locations suitable for specific countermeasures based on crash history

Project Issues

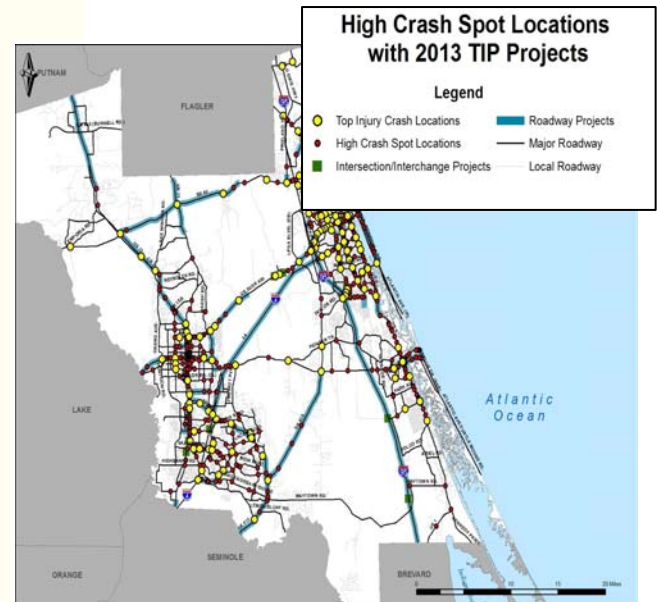
- Interpretation of SAFETEA-LU requirements (should vs. shall)
- Need to integrate traffic volume and roadway characteristics for city and county roads
- Procedures to address safety issues through plan development process.

Solutions Implemented

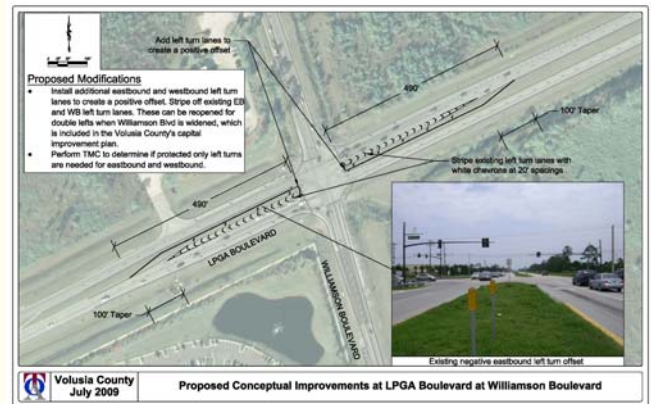
- Clear tables showing SAFETEA-LU requirement and recommended MPO action
- Safety countermeasures matrix approach to identify opportunities
- Safety planning process flow-chart

TOA Contact:
Demian Miller, AICP
Director of Safety and Policy Planning
Tindale-Oliver & Associates, Inc.
1000 North Ashley Drive, Suite 100
Tampa, Florida 33602
(813) 224-8862
dmiller@tindaleoliver.com

Client Contact:
John Moore
Systems Planner
FDOT, District 5
133 South Semoran Blvd.
Orlando, FL 32807
(407)482-7882
john.moore@dot.state.fl.us



5-yr plan and interim year cost-affordable plan projects were reviewed for potential safety issues based on crash frequency, rate, and crash type over-representation.



TOA performed field review of high crash locations and developed concept plans for low cost safety improvements.